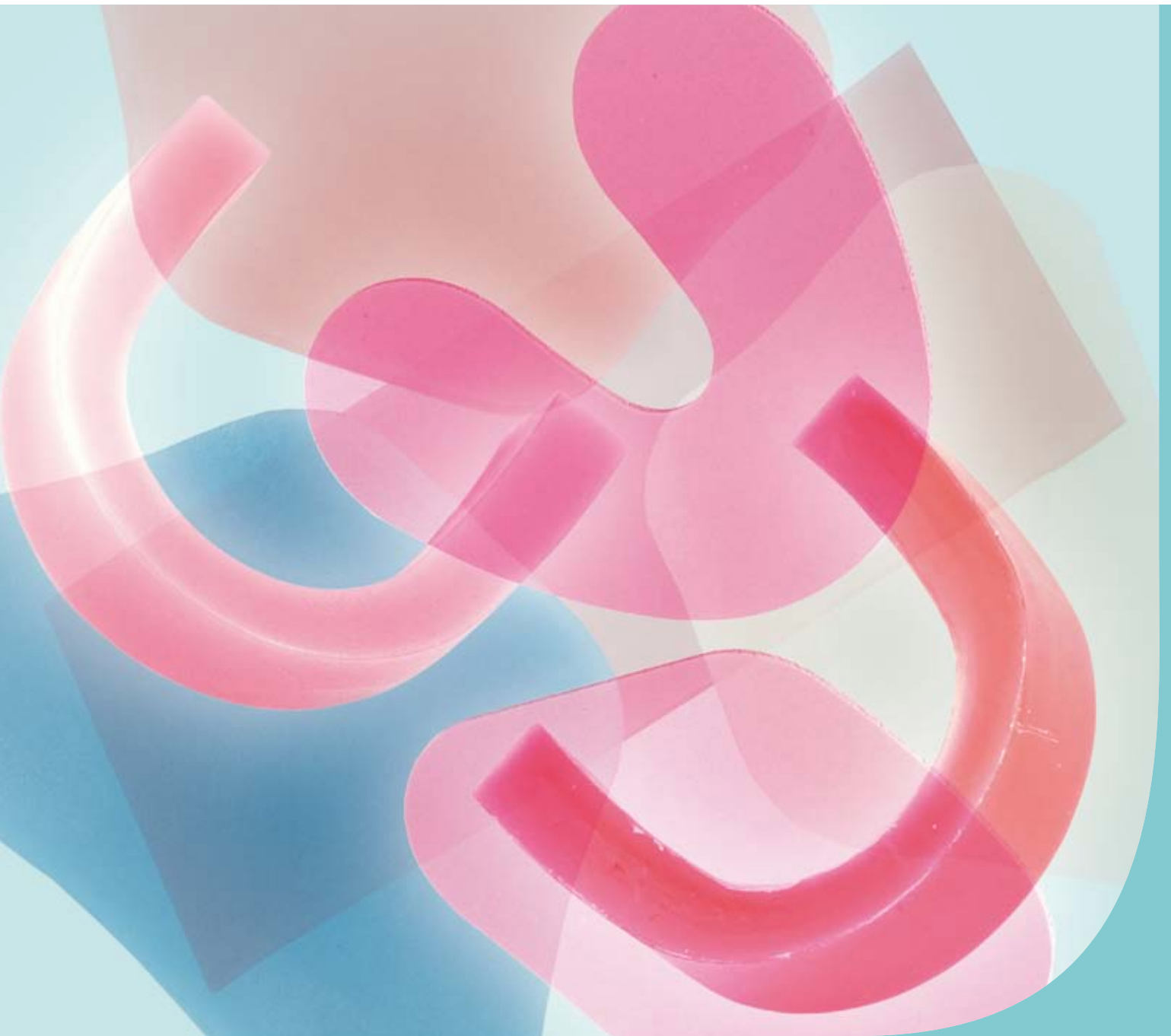


**Vertex** Dental

# Baseplates & waxes Vertex™ Light Curing Trayplates



### Vertex™ Baseplates



For the production of temporary base plates.

- Thickness 1.3 mm (upper and lower)
- Packaging size: 100 plates per box

### Vertex™ Modelling wax



Vertex™ Modelling wax regular is a pink, approximately 1.6 mm thick made of dental wax. These plates have dimensions of about 18.8 x 8.9 cm. For use also in tropical regions we have extra hard wax available as well. Wax Knife also is a part of the Modelling Assortment.

- Bright pink colour
- Packaging: 1000g / 46 wax plates

### Vertex™ Preformed wax rims



Preformed wax rims:

- Red hard (100pcs)
- Pink medium (100pcs)

### Vertex™ Light Curing Trayplates



Vertex™ Light Curing Trayplates with minimal residual layer after polymerisation makes processing easy. Each box contains 50 trays. Available colours are blue, pink and clear. The Vertex™ Light Curing Trayplates can be polymerised with the Vertex™ Eco Light Box. Also as extra large trayplates available.

The following products are related to the Baseplates & waxes and Trayplates:



### Vertex™ Waxknife

Blue waxknife with Vertex inscription.



### Vertex™ Eco Light Box

The high intensity and short polymerisation time, makes the machine suitable for polymerisation of individual light curing trays.

### Vertex-Dental B.V.

Johan van Oldenbarneveltlaan 62 | 3705 HJ Zeist  
P.O. box 10 | 3700 AA Zeist | The Netherlands  
Tel. +31 (0)30-69 76 749 | Fax +31 (0)30-69 55 188  
info@vertex-dental.com | www.vertex-dental.com