

MultimatNTX<sup>press</sup>

MultimatNTX



Meets your needs –  
Fast.

DENTSPLY

What do you expect of your firing/pressing furnace?

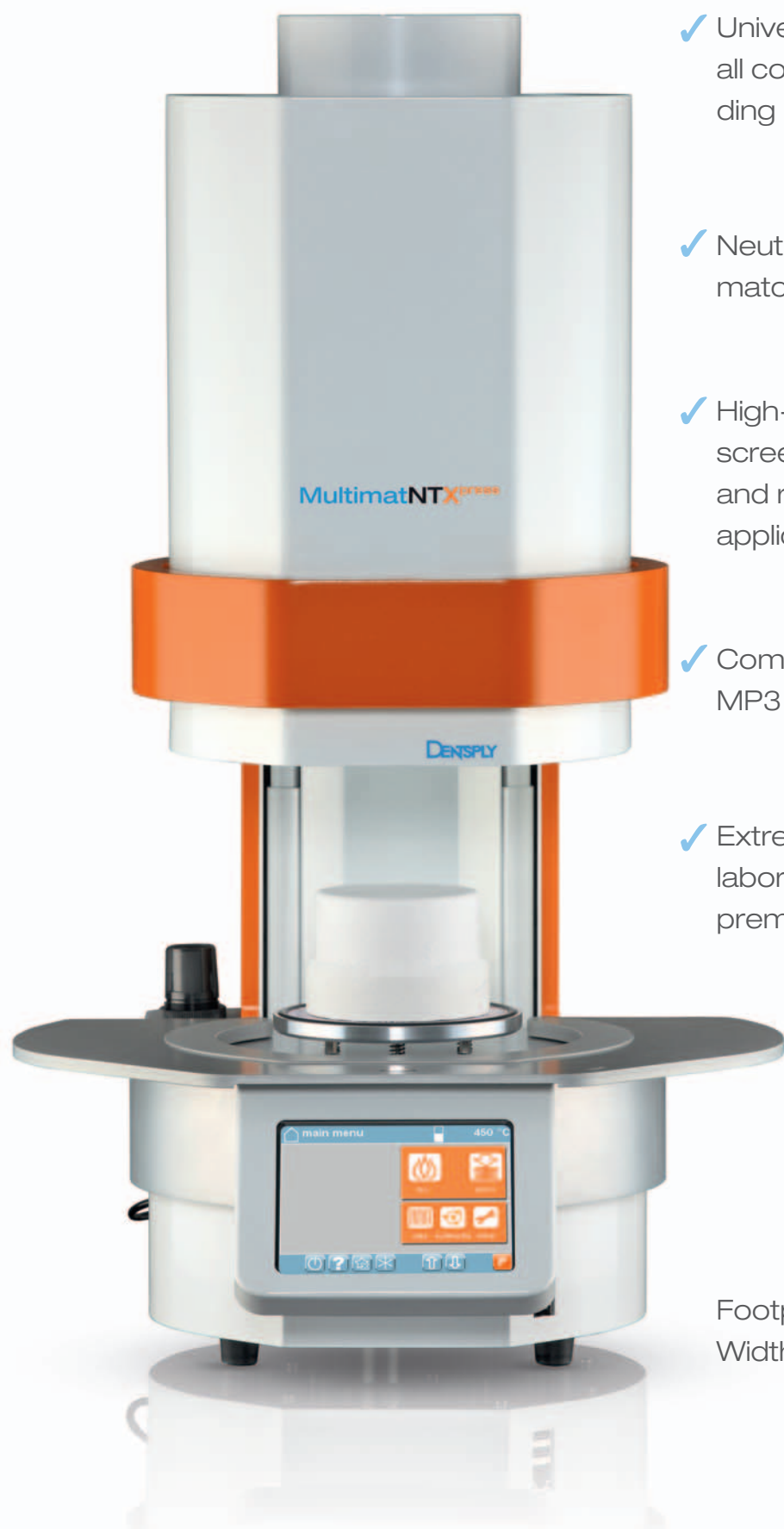
Suitable for all firing and  
pressing programs

Dependable firing results

Easy  
customization

**MultimatNTX**

# Modern design



- ✓ Universal firing/pressing furnace for all common ceramic systems, including lithium disilicate ceramics
- ✓ Neutral contemporary design to match any lab environment
- ✓ High-quality True Colour touch screen displays patient information and renders natural-looking application and training videos.
- ✓ Compatible with video, JPG and MP3 files
- ✓ Extremely small footprint, fits in any laboratory – even if space is at a premium.

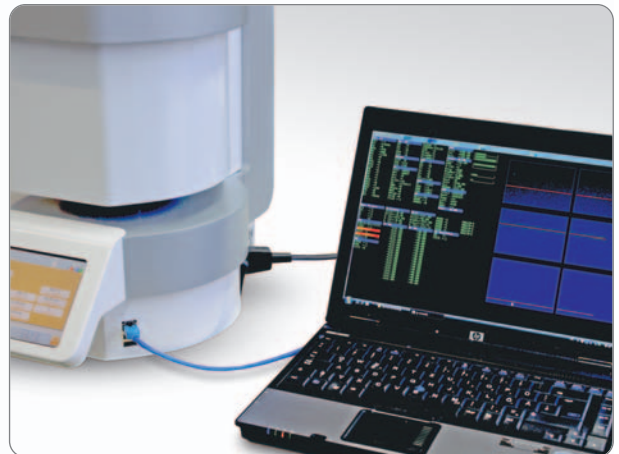
Footprint:  
Width/depth (278 × 422/425) mm

# Perfect reliability

for brilliant firing results

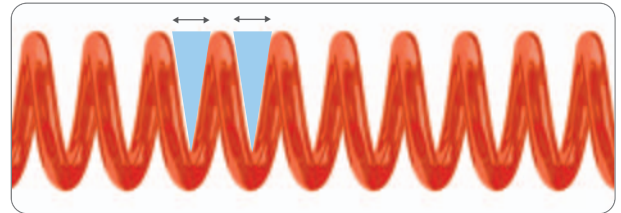


- ✓ “Made in Germany” quality, approved according to international and ETL standards.
- ✓ Furnaces are subjected to one week of continuous stress testing before delivery.

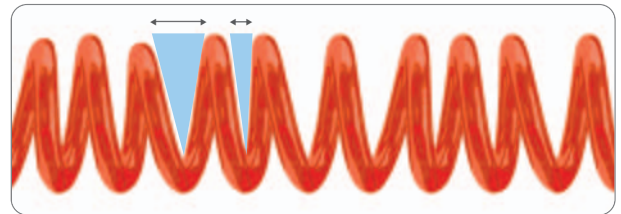


- ✓ Continuous thermo couple monitoring.
- ✓ Power adapter monitors for voltage peaks and short-term power loss.
- ✓ Two-year warranty.

- ✓ An even heating coil protected by a quartz glass tube ensures homogeneous heat distribution within the chamber.



Multimat – even heating coil



Uneven heating coil

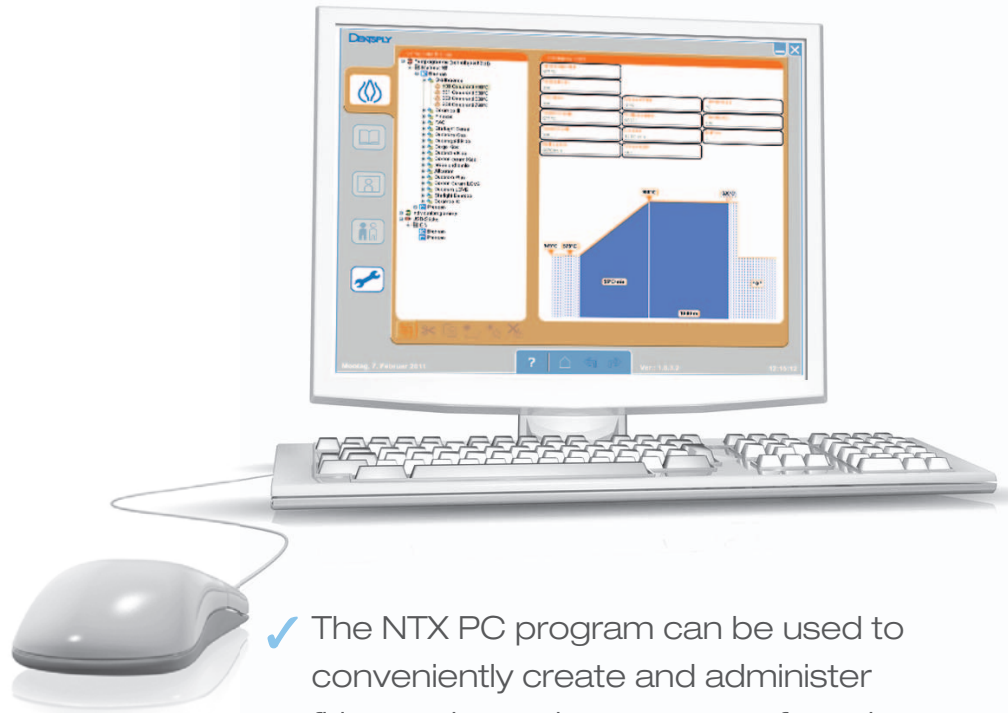
- ✓ A supplementary real-time controller assists the main CPU in providing extra power and highly precise temperature curve.

- ✓ The automated self-test feature guarantees proper function of the entire unit on power-up.



# Easy customization

for everyday use

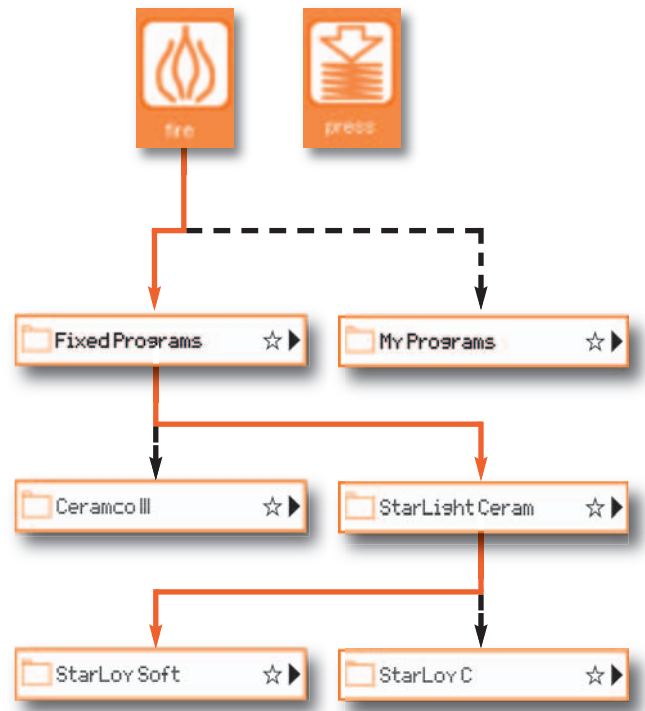


✓ The NTX PC program can be used to conveniently create and administer firing and pressing programs for subsequent transfer to one or multiple furnaces via USB sticks.

✓ “One-touch desktop” implemented by placing appropriate folders or programs directly on the main screen.



- ✓ The logical folder on program structure intuitively guides the operator through all menu levels, directly to the desired program.



- ✓ Thanks to fully customizable firing and pressing parameters, any standard program can be adapted to specific firing objects.



# Technical specifications

## Multimat®NTX

|         |        |                |            |                   |
|---------|--------|----------------|------------|-------------------|
| Height: | closed | approx. 405 mm | Voltage:   | 100 – 115 V       |
|         | open   | approx. 455 mm |            | 230 – 240 V       |
| Width:  |        | approx. 278 mm | Frequency: | 50 – 60 Hz        |
| Depth:  |        | approx. 422 mm | Power:     | 1,580 W with pump |
| Weight: |        | approx. 24 kg  |            |                   |

## Multimat®NTXpress

|         |        |                |            |                   |
|---------|--------|----------------|------------|-------------------|
| Height: | closed | approx. 532 mm | Voltage:   | 100 – 115 V       |
|         | open   | approx. 686 mm |            | 230 – 240 V       |
| Width:  |        | approx. 278 mm | Frequency: | 50 – 60 Hz        |
| Depth:  |        | approx. 425 mm | Power:     | 1,580 W with pump |
| Weight: |        | approx. 26 kg  |            |                   |

| Parameter                | Lower limit                         | Upper limit |
|--------------------------|-------------------------------------|-------------|
| Firing temperatures      | 250 °C                              | 1,200 °C    |
| Time                     | 00:00 seconds                       | 09:59 hours |
| Heating rate, controlled | 1 °C/min                            | 120 °C/min  |
| Vacuum level             | 30 hPa                              | 500 hPa     |
| Vacuum on/off            | within the firing temperature range |             |
| Close                    | time controlled, continuously       |             |

### Accessories:

|                     |   |
|---------------------|---|
| REF 54 6026 0101    | Magnetic plate assy., universal (180 °) |
| REF D 03 532 803    | Silver test calibration kit             |
| REF D 03 002 220 VD | Vacuum pump 230 V/50 Hz incl. filter    |

Technical specifications may change without notice

40085/1103/Z  
Last revision: 03/2011

